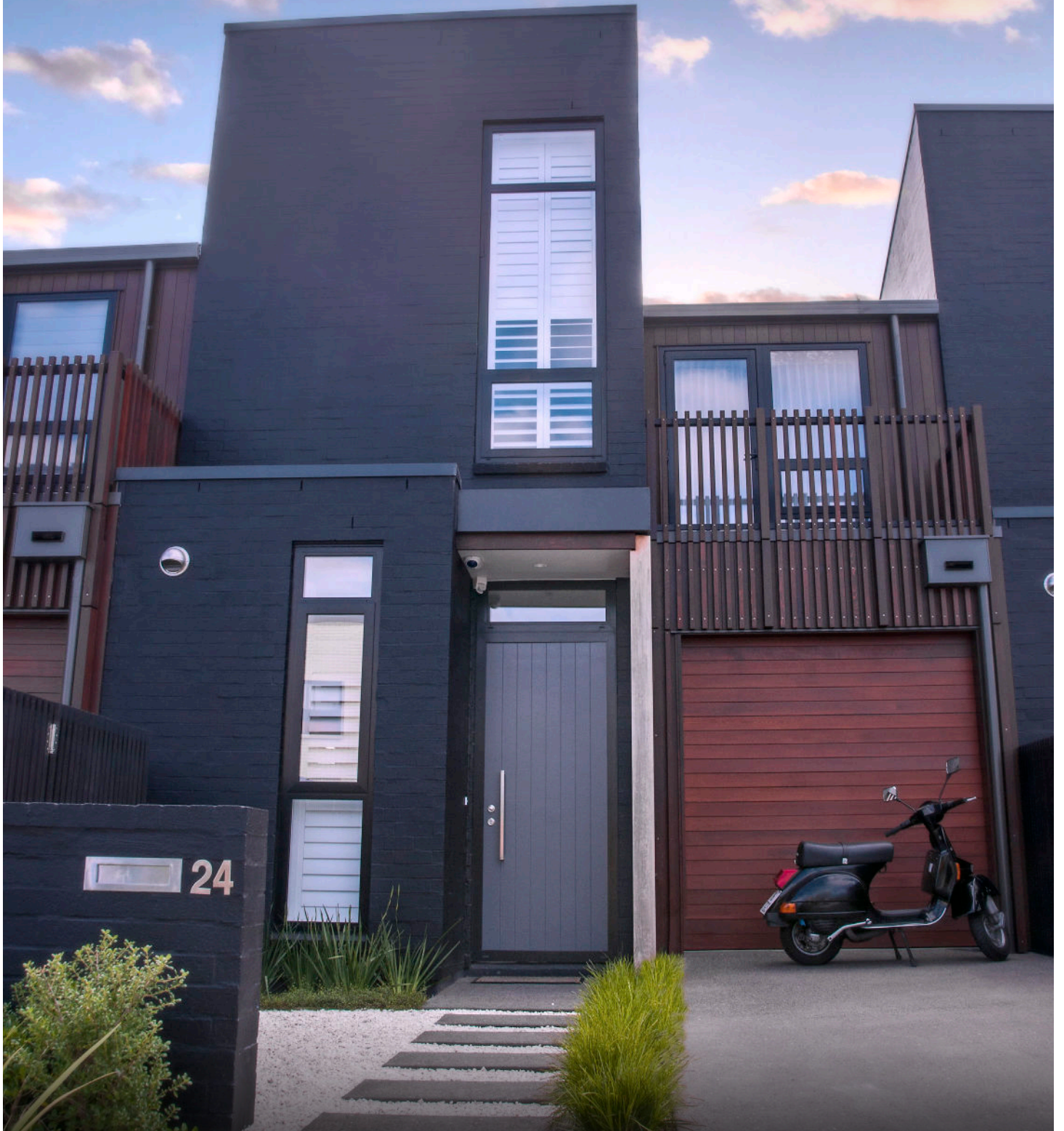




PARKWOOD  
WELCOME HOME

# DURAMAX DOORS

YOUR EXTREME WEATHER PARTNER



# Welcome to our Duramax collection of composite doors. Duramax doors won't rust, rot, twist or dent.

They're designed to withstand the extremes of Australia's weather conditions. These doors can be drilled/machined just like timber, and painted any colour in a standard paint finish. Perfect for exposed back doors/garages.

## DURAMAX FRONT DOORS: THE PERFECT, EVERYDAY 'ALL-ROUNDERS'



- Higher insulation: better U-value than timber doors.
- Hard-wearing and impact-resistant skins (Glass Reinforced Polyester).
- The safer option for your regular, painted front doors.



# STRONG, SECURE AND STYLISH



SCAN THE QR CODE TO LEARN MORE AND EXPLORE OUR RANGE

[www.parkwooddoors.com.au](http://www.parkwooddoors.com.au)



FLS

FVS

FTS

FLAR12SST

FLF10SST

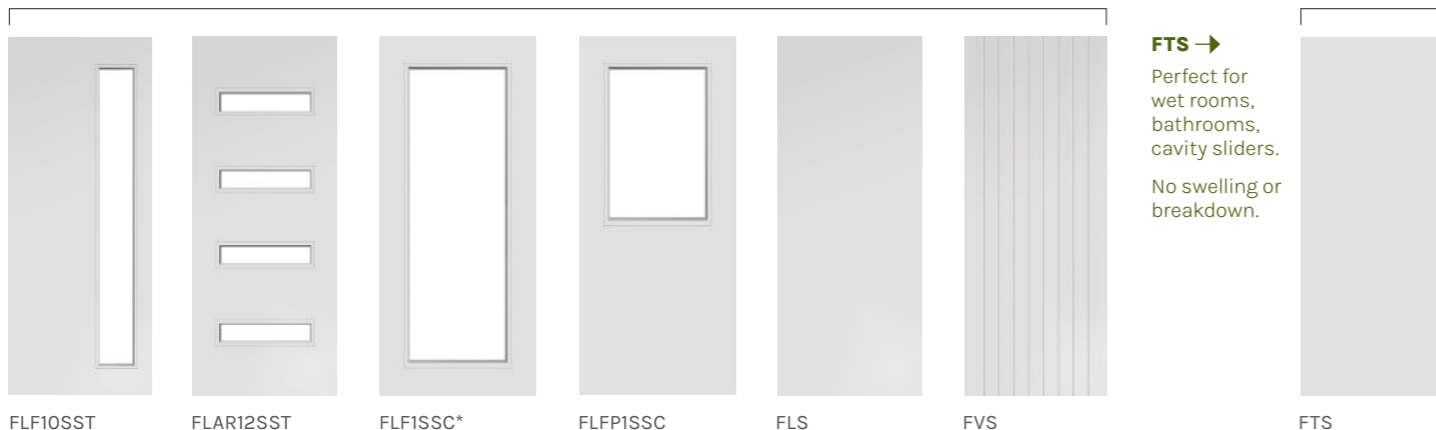
## DURAMAX (COMPOSITE DOOR RANGE)

Available in selected standard sizes. More designs online made to any size up to 2400 x 1060m.

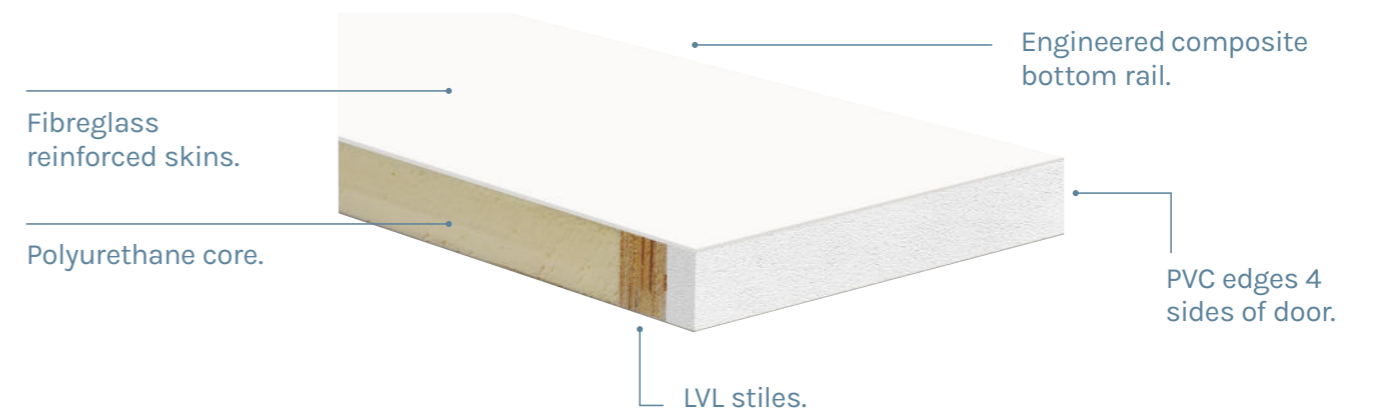


CERTIFIED BAL12.5 \*exception FLF1SSC

All smooth finish > 40mm thickness >



## BUILT WITH THE WEATHER IN MIND;





## CHOOSE A SUPERIOR FINISH

- LVL stiles for superior stability.
- Solid PVC edges - clean and tidy which can be trimmed or rebated.
- Polyurethane core for high insulation.



**CONTACT:**  
[sales@parkwooddoors.com.au](mailto:sales@parkwooddoors.com.au)  
to connect with a door specialist  
[www.parkwooddoors.com.au](http://www.parkwooddoors.com.au)  
Call us on 1800 681 586